

IC Conversion Adapters

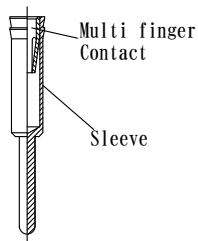
Features ·Use together with mating test socket. Adapter Socket is soldered to PC board.
·After repeatedly use of test socket, if the test socket loses function, you can exchange to new test socket.

Specifications:

Temperature Range : -55°C~+125°C
Current Rating : 1A
Contact Resistance : 15mΩ/pin max
Insulation Resistance : 200MΩ以上
Durability : 500cycle min

Materials:

Socket Pin
Sleeve : Brass, Gold plated over Ni
Contact : Beryllium Copper, Gold plated over Ni
Insulator : Glass Epoxy, PEEK etc



Used pin
image

A design requires the following information.

- IC socket sample, the drawing of an inspection socket lead shape.
- Limitations, such as outside, height, and operating area
- Others

example) Is it used by a two-layer structure
The necessity for extraction tool
Thickness of a PCB
Restriction of a through hole

How to order (When standard item.)

BB 100 - 0240 - XXXX

Pitch

150:1.5mm

127:1.27mm

100:1.00mm

080:0.8mm

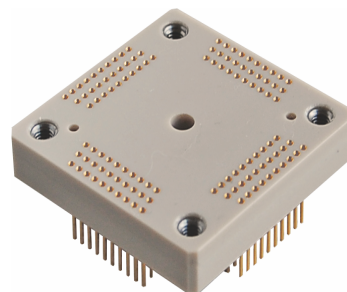
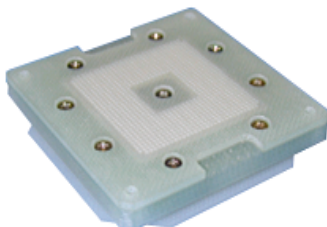
065:0.65mm

050:0.5mm

040:0.4mm

Number of position

The product number which our company decides



High Temperature Spec
-55°C~+250°C

IC Conversion Adapters / Fork Socket pin type

