

## Right Angle type, High current Socket pin

- Socket pin right angle to wire
- Space saving
- Mating/unmating, Easy Circuit exchange

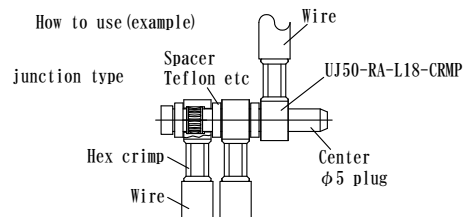
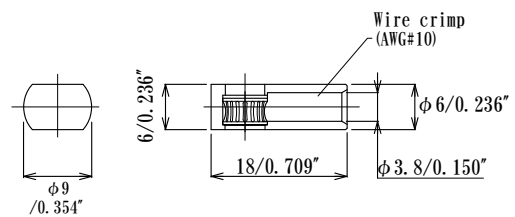
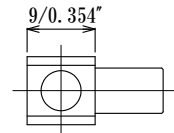
φ5.0mm/0.197" Right Angle Socket

**UJ50-RA-L18-CRMP**

Current rating : 25A at 25°C



Acceptable plugpin  
: φ5.0mm/φ0.197" dia.



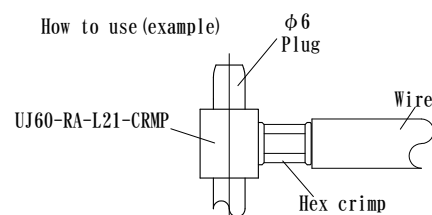
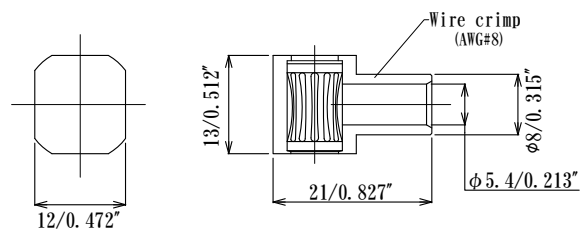
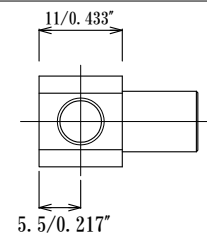
φ6.0mm/0.236" Right Angle Socket

**UJ60-RA-L21-CRMP**

Current rating : 50A at 25°C



Acceptable plugpin  
: φ6.0mm/φ0.236" dia.



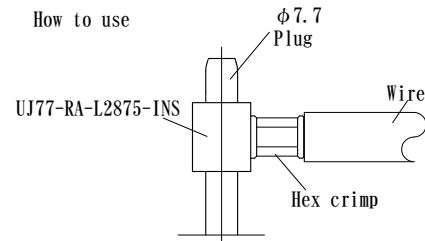
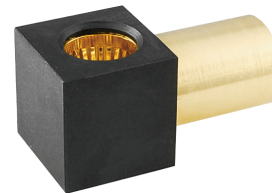
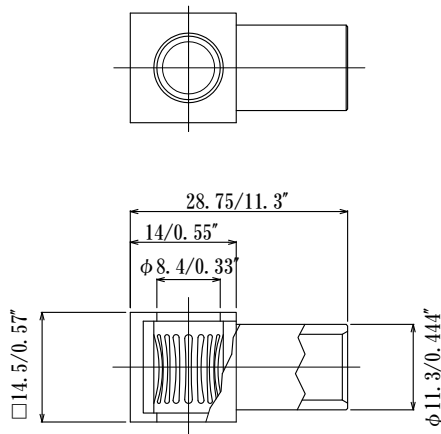
## Right Angle type, High current Socket with Insulator

80A

- Socket pin right angle to wire
- Space saving
- Mating/unmating, Circuit exchange

### UJ77-RA-L2875-INS

Acceptable plugpin  
:  $\phi 7.7\text{mm}/\phi 0.303\text{''}$  dia.  
Current rating : DC80A at 25°C



#### Materials

##### Socket pin

Louver: Beryllium Copper, Heat treated

Gold Plated over Nickel plating

Sleeve: Brass, Gold Plating over Nickel plating

Insulator: PBT glass filled or PPS, black, UL94V-0