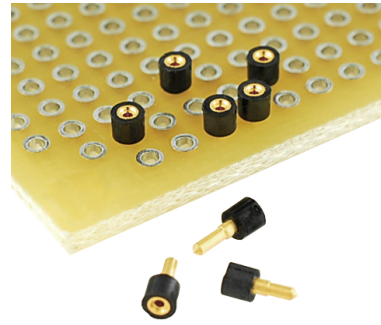


One Pin Plug & Socket

- High reliability round contact providing good electrical and mechanical performance.
- For larger than 2.54mm pitches.
- Useful for inspection and general PCB mounting.
- Your Specific Custom Designs welcome. Consult us for details.

2.54mm Pitch Min.



Specifications

Acceptable Plug : $\phi 0.52 \sim \phi 0.30$
 Contact Resistance : less than $15m\Omega$
 Current Rating : 1.3A
 Operating Temperature : $-55^{\circ}\text{C} \sim +150^{\circ}\text{C}$

Materials

Plug

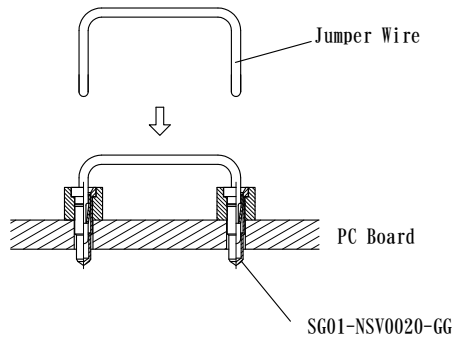
Plug : Brass Gold over Ni plating
 Insulator : High temp. thermoplastic

Socket

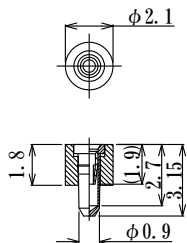
Sleeve : Brass Gold or Tin over Ni plating
 Contact : Beryllium Copper, Gold over Ni plating
 Insulator : High temp. thermoplastic

How to use

example

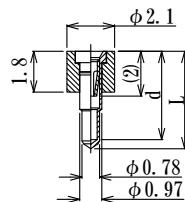


Socket



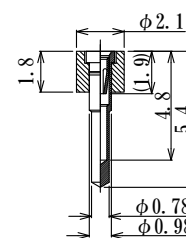
SG01-NSF0010-SN (Sleeve Tin plated)
SG01-NSF0010-GG (Sleeve Au plated)

PCB hole size : $\phi 1.0 \pm 0.05$



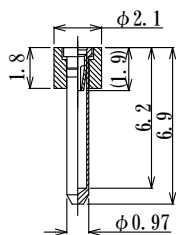
Parts Number	Length L	Depth d
SG01-NSV0020-GG	4.2	3.9
SG01-NSV0030-GG	5.0	4.1
SG01-NSV0040-GG	7.6	5.5

PCB hole size : $\phi 1.1 \pm 0.05$



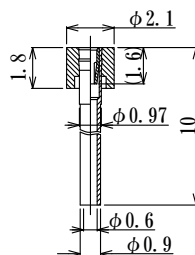
SG01-NS55-GG

PCB hole size : $\phi 1.1 \pm 0.05$



SG01-NSF0035-GG

PCB hole size : $\phi 1.1 \pm 0.05$

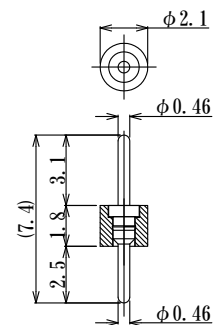


Thru Hole

SG01-NZP100-GG

PCB hole size : $\phi 1.1 \pm 0.05$

Plug



IS01-F046-L74

PCB hole size : $\phi 0.55 \pm 0.05$